

Milford & Penny Popp Estate



Estate Auction

MONDAY - JUNE 9 AT 11:30 A.M.

Located at 22571 CR-687 - Bangor, MI 49013

North-West of Bangor, MI on M-43 to CR-687 or 4-1/2 Miles South of 'Ginger Man Race Way'

MOWER * TRAILERS * ATV

-2014 Husqvarna 27 H.P. MZ-61 Zero Turn Mower * (2) Tandem Axle Trailers * 2009 HONDA 4-Wheeler Recon ES-250, 2X4.

PICKUP TRUCK

-2004 Chevy Truck, 8 Ft. Bed, V-6 (Damaged Hood by a Deer, but runs).

COLLECTOR CAR

-1978 Trans-Am, Pontiac-400 Motor, 4 Barrel Carburetor, Dual Exhaust. VIN: 2W87Z8N194067

BOATS * SHOP MADE WOODEN BOAT

-StarCraft 16 Ft. Tri-Hull w/Johnson 65 H.P. Motor, includes Yacht Club Trailer * (2) 13-1/2 Ft. DORY Style Wooden Boats.

SHOP TOOLS * GARAGE ITEMS

-Acetylene Troch Set * Upright Air Compressor * 30" Counter Top Break * Counter Top Drill Press * Clark MIG-130 Welder * 5000 Watt Generator * Troy-Bilt Snow Blower * Stihl Weed Eater * Chain Saws * GMC Square Body Front Clip * Tool Cart * Nut & Bolt Bin * Cub Cadet RT-65 Rear Tine Tiller * Old 2 Row Corn Planter * Hand Power Tools * Garden Tools * Metal Storage Cabinet * Misc. Items found Around an Old Workshop.

POTTERY * ANTIQUES * FURNITURE * HOUSEHOLD * COLLECTIBLES * OUTHOUSE

-Assortment of Pottery Pieces (Hull, McCoy, Shawnee, Flora-line & Redwing) * Large Old Cupboard * Oak Corner Cabinet * Oak Table w/6 Chairs & 3 Leaves * Small Church Pew * Step Back Cupboard * Button Collection * Craft Items * Queen Size Bed * Chest of Drawers * LANE Cedar Chest * Red Wing Crock * Old Jugs * Lighting Rod w/ Glass Balls * Old Outhouse * Dinner Bell * OX Yoke * Carnival Glass * Collector Pottery Items * Dishes, Pots & Pans * Books * Holiday Items * Old Parking Meter * Picnic Table * Sofa * Recliner Chair * Oak Chair * Full Size Bed * Bookshelf * Love Seat * Yard Ornaments * Gazing Balls w/Stands * Wash Stand * Single Bed * Wall Art * Pictures on the Wall * Other Interesting Items!

PERSONAL PROPERTY TERMS: CASH, Good Check or Credit/Debit Card with Proper I.D. - Not responsible for accidents or goods after sold. All items are being sold in "AS-IS" condition. Announcements made day of auction supersede any printed material. Pre-View morning of the Auction. No items will be removed until PAID IN FULL. 10% buyers premium in effect.



Side View Looking North



Front View of House & 2 Car Garage



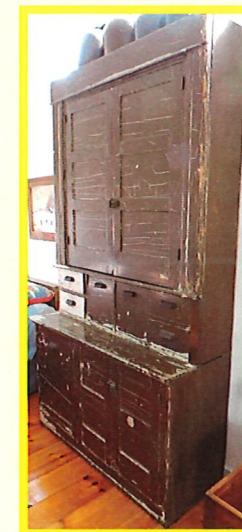
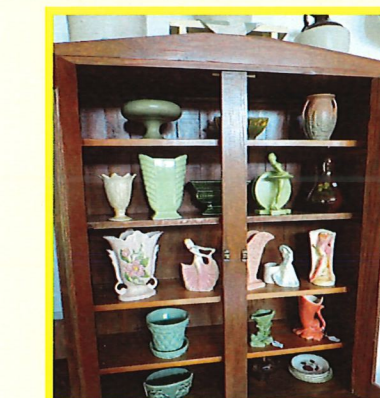
Heated Shop - Pole Building
30' X 48' X 10 Ft. Overhead Door



Offered At
12 Noon



(2) Out Buildings



OPEN HOUSE * PREVIEW
Sunday - June 8
1:00 P.M. to 2:00 P.M.

REAL ESTATE TERMS: \$5,000 Non-Refundable Deposit Day Of Auction, Balance Due In 30 Days. Seller To Pay State & County Transfer Tax, Owner's Title Insurance Fee And New Deed Preparation. Sold In "AS-IS" Condition. Taxes Will Be Prorated To Day Of Closing. Sold By Current Legal Description, If Sold In 2 Separate Parcels, Buyer And Seller To Split Survey Cost 50/50. A 10% "Buyer's-Premium" Will Be Added To Final Accepted Bid To Get Contract Price. Buyer To Pay For Insured Closing And Recording Fees. All Offers Are Subject To Estate Approval. **Open House/Viewing Sun. June 8** From 1:00 P.M. to 2:00 P.M. - **Contact Geneva Township For Use And Zoning.**

ESTATE OF
Milford & Penny Popp
22571 CR-687
Bangor, MI 49013



Lunch Box by
Celena

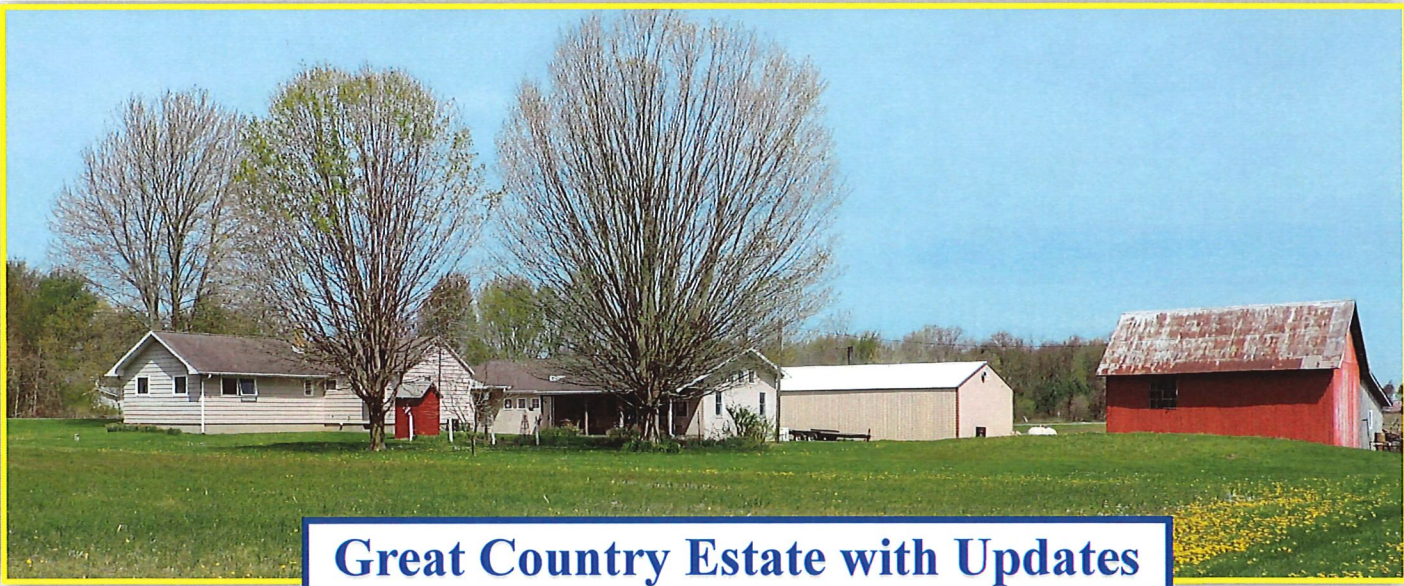
GLASSMAN AUCTION SERVICE

AUCTIONEERS & REAL ESTATE
P.O. Box 315 * 6815 E. Main St. * Eau Claire, MI 49111
Manager: John Glassman 269-757-3315
www.glassmanauctions.com

269-757-3315

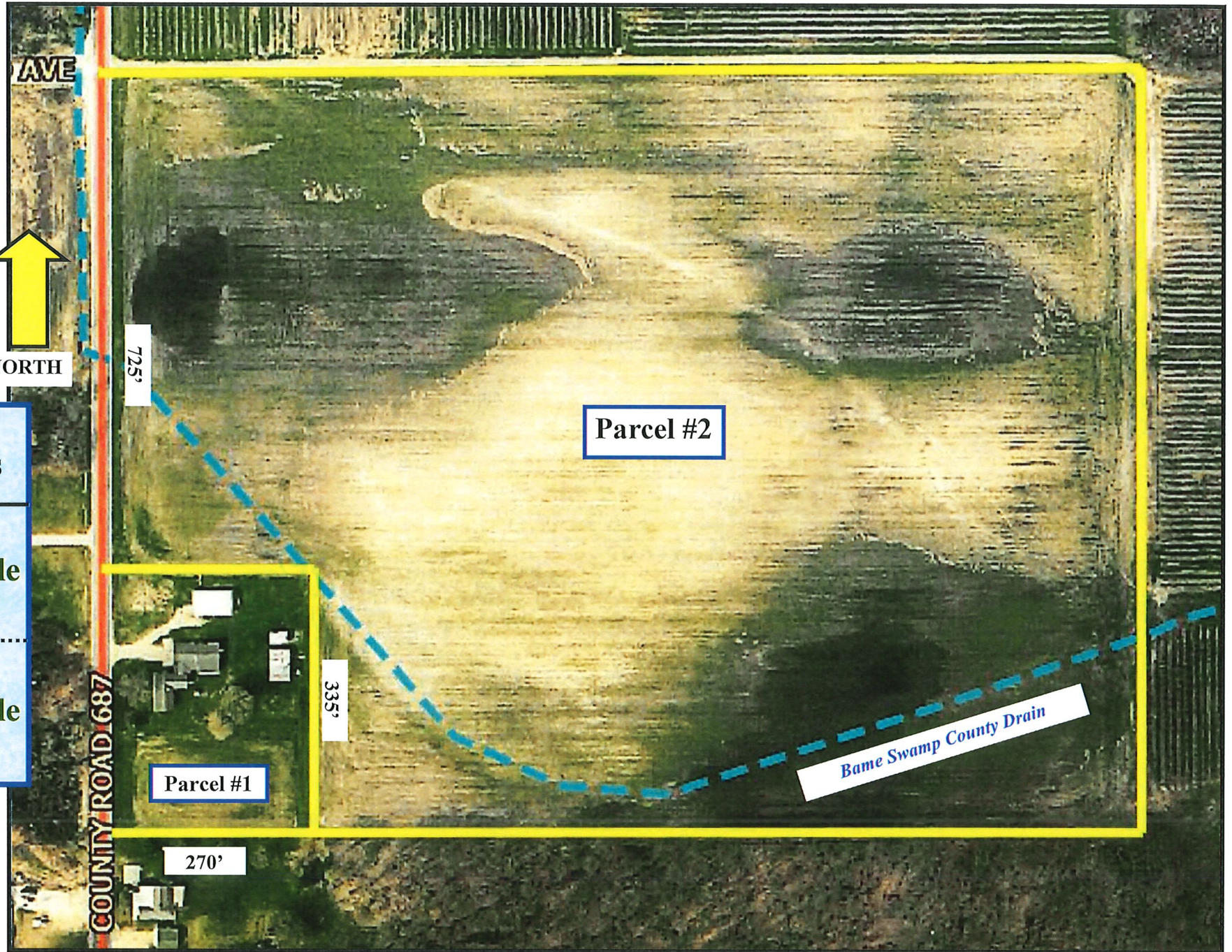


29 Acres Offered Altogether Or in 2 Seprate Parcels



Great Country Estate with Updates

Featuring: 3 Bedroom 2-1/2 Bathroom Home (Approx. 2,200 Sq. Ft.) with Central Air, LP Gas & Oil Forced Air Heat, Generac Whole House Generator, Bonus Family Gathering Room, Basement, 2 Car Attached Garage, 30' X 48' Heated Shop Pole Barn, (2) Out Buildings, Great Country Setting!



Offered Altogether Or in 2 Separate Parcels

Parcel #1
-2 +/- Acres w/House, Pole Barn, Storage Sheds.

Parcel #2
-27 +/- Acres of Tillable Vacant Land.

REAL ESTATE TERMS

- \$5,000 Non-Refundable Deposit Day Of Auction, Balance Due In 30 Days.
- Seller To Pay State & County Transfer Tax, Owner's Title Insurance Fee and New Deed Preparation.
- Sold In "AS-IS" Condition.
- Taxes Will Be Prorated To Day Of Closing.
- Sold By Current Legal Description, If Sold In 2 Separate Parcels, Buyer And Seller To Split Survey Cost 50/50.
- A 10% "Buyer's-Premium" Will Be Added To Final Accepted Bid To Get Contract Price.
- Buyer To Pay For Insured Closing And Recording Fees.
- All Offers Are Subject To Estate Approval.
- Open House/Pre-View Sun. June 8 From 1:00 to 2:00 P.M.
- Contact Geneva Township For Use And Zoning.



BROKER - REALTOR
Anna Glassman - (269) 757-6057

AUCTIONEERS NOTE: Auctioneer reserves the right to offer altogether or in 2 separate Parcels. Auctioneer will determine minimum bid raise amount.

OPEN HOUSE * PREVIEW
Sunday - June 8
1:00 P.M. to 2:00 P.M.

Real Estate
Offered at 12:00 Noon

