



# Gerald E. Parrigin Estate Estate Auction



**FRIDAY - SEPTEMBER 13 AT 12:00 NOON**

**Located at 188 & 250 S. Paw Paw Street - Coloma, MI**  
*Corner of S. Paw Paw Street and Leedy Court*

## VEHICLES

- 2010 Chevy Silverado 4 Door Truck, 4X4, 275,057 Miles, VIN: 3GCRKTE31AG201683
- 2008 Chevy IMPALA, 4 Door, 60,852 Miles, VIN: 2G1WT58K081373407
- 2003 Ford Econoline Conversion Van, 111,937 Miles, VIN: 1FDRE14L93HB12977
- 1986 MERKUR, 2 Door, 99,702 Miles, VIN: WF1BP80W4GM643826



## GARAGE ITEMS \* SHOP TOOLS METAL CAR PORT

- Car Port: 10 Ft. X 14 Ft. Metal Car Port
- Kennedy Rolling Tool Cabinet; MATCO Rolling Tool Cabinet; WEATHERHEAD Multi-Drawer Cabinet; Miller Welder; 2-Ton Chain Hoist; Spray Tech Pain Sprayer; Sockets; Wrenches; Power Tools; Barrel Cart; Jack Stands; Old Mercury 45 H.P. Boat Motor; Chrysler Motor (413) V-8; Single Axle Trailer; Storage Racks; Other Shop Related Items; Misc. Items found at a repair shop!
- Lawn Mower: Craftsman 20 H.P. - 42" Cut Mower

## HOUSEHOLD GOODS \* FURNITURE COLLECTIBLES

- Recliner \* Imitation Fireplace \* Chest of Drawers \* Knee Hole Desk \* Cedar Chest \* Dresser w/Mirror \* Single Bed \* Full Bed \* Queen Size Bed \* Glassware \* Collectibles \* Pots and Pans \* Plus Other Misc. Household Items.

**PERSONAL PROPERTY TERMS:** CASH, Good Check or Credit/Debit Card with Proper I.D. - Not responsible for accidents or goods after sold. All items are being sold in "AS-IS" condition. Announcements made day of auction supersede any printed material. Pre-View morning of the Auction.

**ESTATE OF:**  
**Gerald E. Parrigin**  
**Stacey Nutting, P.R.**  
**188 S. Paw Paw St.**  
**Coloma, MI 49038**



*Lunch Box by Celena*

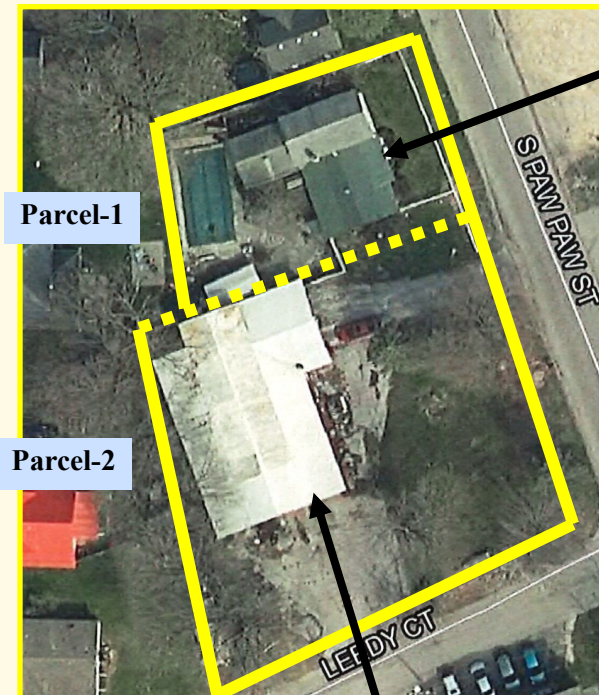
## GLASSMAN AUCTION SERVICE

**AUCTIONEERS & REAL ESTATE**  
P.O. Box 315 \* 6815 E. Main St. \* Eau Claire, MI 49111  
**Manager: John Glassman 269-757-3315**  
www.glassmanauctions.com  
**269- 757-3315**



**Real Estate Terms:** \$5,000 Non-Refundable Deposit Day Of Auction, Balance Due In 30 Days. Transfer with New Deed and Title Insurance. Sold in "AS-IS" Condition. 10% "Buyer's-Premium" added to final accepted bid to get contract price. Buyer to Pay for Closing Fee, Recording Fees and Any Fees Required by Their Lender, If Any. Announcements Made Day of Auction Supersede Any Printed Material. Contact City of Coloma for Property Use and Zoning. Offers are subject to P.R. Approval. Any items left at closing are considered abandoned and the new buyers responsibility to clean out. Auctioneer reserves the right to offer together or in 2 parcels.

**REAL ESTATE**  
**Offered at 12:30 P.M.**  
**Offered Together Or in 2 Parcels**



## Parcel #1 188 S. Paw Paw St.

- 3 Bedroom 2 Bathroom Home (Approx. 1,900 St. Ft.)
- Appliances Included: Stove, Refrigerator, Freezer, Washer & Dryer*
- Partial Basement
- Gas Heat w/Central Air
- City Water & Sewer
- Inground Pool
- City of Coloma/Berrien County
- Land Use (Residential Improved)
- #11-60-0340-0015-00-3
- 2023 Annual Taxes \$1,542
- Assessor Value \$142,800

**Open House**  
**Thurs. Sept. 12**  
**12 Noon - 1PM**



## Parcel #2 250 S. Paw Paw St.

- Partially Insulated Shop (Approx. 3,200 Sq. Ft.)
- w/Attached 2 Car Garage, Plus 1 Bathroom*
- 3 Overhead Doors
- Ceiling Gas Heat Unit
- City Water & Sewer
- City of Coloma/ Berrien County
- Land Use (Business Improved)
- #11-60-0340-0016-00-0
- 2023 Annual Taxes \$3,090
- Assessor Value \$140,600

**Open House**  
**Thurs. Sept. 12**  
**12 Noon - 1PM**