



**"FORMER POWELL CONSTRUCTION"**

# PUBLIC AUCTION

**THURSDAY - MAY 6 @ 10:00 A.M.**



**Located at 3531 Niles Rd. (M-63) - St. Joseph, MI 49085**  
**South of St. Joseph, MI and just South of I-94 off Exit #27**



## TRACTOR \* LONDON TAXI \* MOTORCYCLE \* TRAILERS

- KUBOTA B-7800 Tractor w/LA-402 Loader
- 6 Ft. King-Kutter Brush Chopper
- 1966 FX-4D Austin London Taxi Cab
- 1995 BUELL S-2 Thunderbolt, 5,020 Miles,  
1203-CC Harley-Davidson Sportster Motor
- 12 Ft. Tandem Axle Enclosed Trailer
- 18 Ft. Tandem Axle Implement Trailer
- HONDA-50 (In Parts)

**Pre-View**  
**Wed. May 5**  
**11-1:00 P.M.**

## SHOP TOOLS \* WOOD WORKING TOOLS CONTRACTOR TOOLS

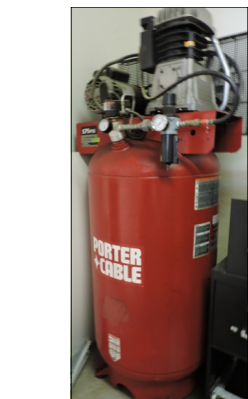
- Miller Syncrowave 200 Welder \* Acetylene Torch Set \* Delta Jointer \*  
**Delta Shaper** \* Delta Planer \* Rockwell 14" Band Saw \* **Disk/Belt**  
**Sander** \* Craftsman Drill Press \* **Table Saw** \* Assortment of Wood and  
Metal Clamps \* Delta Grinder \* Delta Jig Saw \* Delta Dust Collector \*  
**Hitachi Chop Saw** \* **Knaack Metal Rolling Job Box** \* Craftsman Tool  
Chests \* **Porter-Cable 7 H.P. Upright Air Compressor** \* 6.5 H.P.  
Craftsman Upright Air Compressor \* Porter-Cable Upright Air Compres-  
sor Metal Racks \* **Steel Pallet Racks** \* **Scaffolding** \* Air Nailers \* **Gen-**  
**erator** \* Milwaukee Portable Band Saw \* Craftsman Rolling Tool Chests  
\* **Craftsman Tools** \* 3-Ton Floor Jack \* **Die Hard Fast Charger** \* As-  
sortment of Air Tools \* 12 Ft. Fiberglass Step Ladder \* 18" Jeep Wrangler  
tires & wheels (like new) \* Rims.

## HOME REMODELING ITEMS

- Wood Flooring (Cherry-Oak-Maple) \* Trim \* Sinks \* **Shower Stalls** \* Bathroom  
Fixtures \* Cambria Marble Countertop \* Simonton Windows \* Odd lots of ceramic  
tiles \* Furniture \* Misc. House Items.

## RECREATIONAL ITEMS \* HOUSEHOLD ITEMS \* ANTIQUES

- Stand-Up Paddle Board** \* Assortment of Beds \* Dressers \* Cabinets \* Household  
Misc. \* Neon Sign (Needs Repair) \* Strap On Car Top Storage \* Shelving \* Chairs  
\* **Antique Wall Hangers** \* Collectibles.



## GLASSMAN AUCTION SERVICE

**Auctioneers \* Real Estate**

[www.glassmanauctions.com](http://www.glassmanauctions.com)

**269) 757-3315**

**Sale Manager: John Glassman 269-757-3315**



**Lunch Box**  
**by "Celena"**

**TERMS:** Cash or Good  
Check w/Proper I.D. w/  
Proper I.D. - Not re-  
sponsible for accidents  
or goods after sold. An-  
nouncements made day  
of sale supersede any  
printed material. **Open**  
**House Wed. 11-1:00**

**FORMER**

***Powell Construction***

**3531 Niles Rd. (M-63)**  
**St. Joseph, MI 49085**



**Commercial  
Industrial  
Zoned  
Real Estate**

**Commercial  
Industrial  
Zoned  
Real Estate**

REAL ESTATE ALSO FOR SALE

REAL ESTATE INFORMATION

COMMERCIAL/INDUSTRIAL - 1.14 ACRES

ASKING \$359,000 - MAKE YOUR OFFER!

(TAKING OFFERS DAY OF SALE, IF NOT SOLD PRIOR TO AUCTION DATE)

-2,300 Sq. Ft. +/- Brick Office Building

w/Full Basement

-40' X 61' Shop Building

-50' X 110' Storage Building

-Royalton Township/Berrien County

-11-17-0007-0021-01-4

-2020 Taxes: S - \$6,595.98, W - \$703.33

-SEV 171,400

**Real Estate Terms:** \$5,000 Non-Refundable Deposit, balance due in 30 days. Transfer with Title Insurance and New Deed. Sold in “AS-IS” condition. All offers are subject to sellers approval. Sold by current legal description, no survey given. Call Royalton Township for Zoning and Use.



**Commercial  
Industrial  
Zoned  
Real Estate**

**OPEN HOUSE**  
**Wednesday, May - 5**  
**11:00 A.M. to 1:00 P.M.**

